

INDUSTRIAL &  
COMMERCIAL



# ABOUT US

Mildren Construction are a main contractor working across the south of England, specialising in the design and build of large industrial, logistics and retail projects.

Our in-house civils capabilities work in parallel with our construction teams, enabling smooth execution of complex projects.

Operating since 1987, we hold long-term relationships with both regional and national consultants, suppliers and specialist subcontractors, providing a complete service to the industry.





## OCEAN INFINITY, SOUTHAMPTON

### THE DETAIL

Extensive fit-out to create state-of-the-art headquarters for one of the industry's leading marine technology businesses. The project entailed construction of a modern office environment and one of the most technologically advanced control rooms in the marine industry. This was all complemented by natural lighting, a two storey living wall and many other sustainable features.

**Client:** Ocean Infinity  
**Sq ft:** 52,000



### THE DETAIL

10 high quality units featuring PV panels, deep access yards, reception areas, fitted offices and welfare, generous mezzanine levels, electric seasonal shutter loading doors and EV charging points.



## ADANAC TRADE PARK PHASE II

A project resulting in repeat business at Adanac Trade Park, Nursling, Southampton.

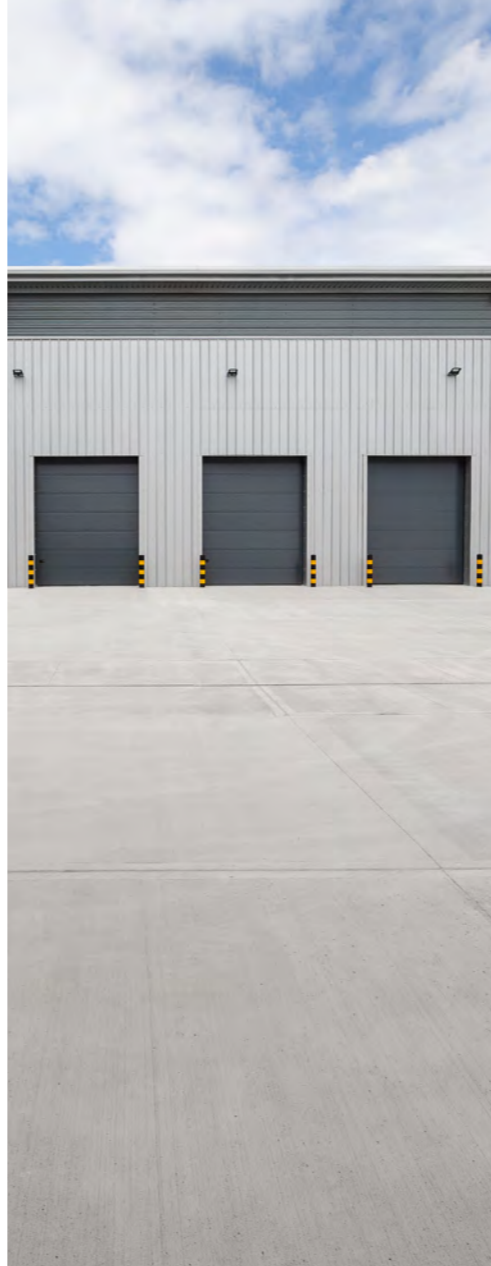
**Client:** Oceanic Estates  
**Sq ft:** 142,000

# PLOT 35, WALWORTH BUSINESS PARK, ANDOVER

## THE DETAIL

Two steel framed industrial units with mezzanine office space. Each unit consists of a large warehouse shell area with mezzanine office core.

**Client:** Kier Property Developments  
**Sq ft:** 62,000



Mildren have completed a number of projects with Kier Property Developments including Fulcrum in Whiteley.

# PLOT 3, BOURNEMOUTH AIRPORT

## THE DETAIL

Industrial unit with first floor mezzanine level and an open plan office with a future-proofed plant deck and ground floor undercroft.





## ADANAC TRADE PARK BUILDING C

### THE DETAIL

Our second project for Oceanic Estates was built using a steel frame, traditional cladding, curtain walling with blockwork on the ground floor and polished concrete block externally.

**Client:** Oceanic Estates  
**Sq ft:** 33,000





### THE DETAIL

Three industrial / warehouse units for use as high quality employment space. The buildings include offices, external yards and parking areas.



## FARADAY BUSINESS PARK, FAREHAM

Located adjacent to Solent Airport on an existing business park.

**Client:** Fareham Borough Council  
**Sq ft:** 58,000



# FORGE WOOD, CRAWLEY

## THE DETAIL

Shell and core, providing a steel framed building housing 14 industrial units.

The development was designed to attract new businesses, providing employment space in the area.

**Client:** Taylor Wimpey and Persimmon Homes  
**Sq ft:** 40,000



## PROJECT LIAISON INCLUDED:

- Working with Network Rail to execute a BAPA
- Close liaison with, stakeholders, residents and developer contractors

- Working with local schools and colleges
- Providing employment and work experience opportunities locally

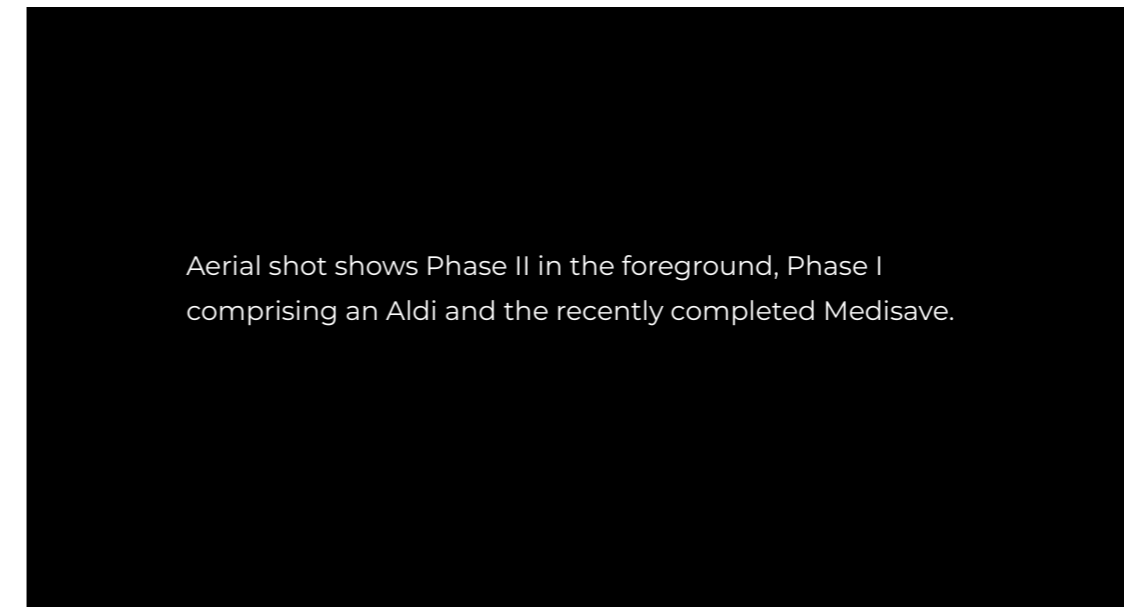
# WEYMOUTH GATEWAY

## THE DETAIL

A new retail park on Mercery Road, Weymouth. The development offers a Dunelm, B&M, Costa Coffee and a McDonalds.

**Client:** London Metric

**Sq ft:** 70,000



Aerial shot shows Phase II in the foreground, Phase I comprising an Aldi and the recently completed Medisave.





## CONCORDE PARK, FAREHAM

### THE DETAIL

Design and construction of 10 units ranging from 2,971 sq ft to 20,000 sq ft with covered loading facilities and high quality office space. Adjacent to a SINC (Site of Importance for Nature Conservation).

**Client:** Kingsbridge Estates  
**Sq ft:** 92,000

# ST JAMES EMPLOYMENT UNIT

## THE DETAIL

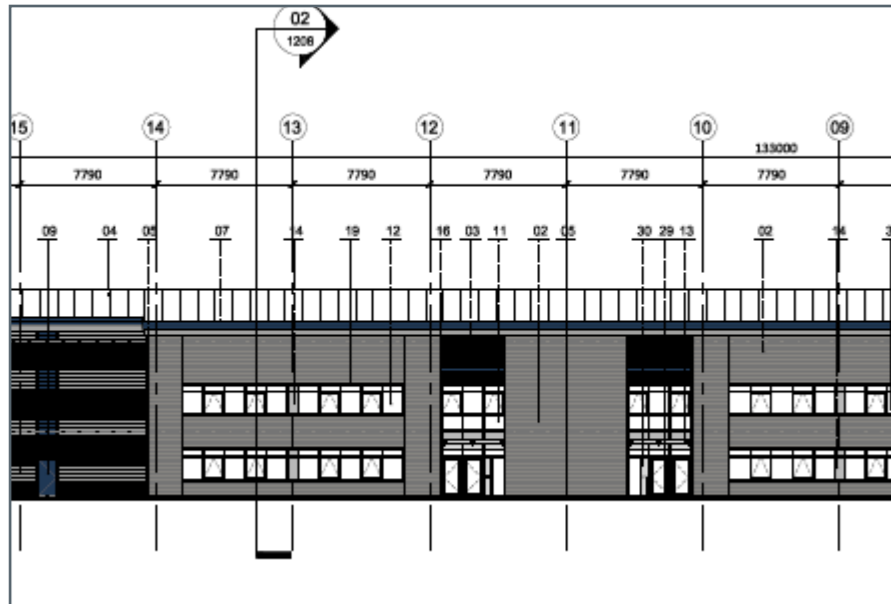
Industrial development including demolition of existing buildings following asbestos removal.

**Client:** Chichester District Council  
**Sq ft:** 48,000



The new development comprising five new buildings, subdivided into 30 new starter units with current tenants working in a variety of industries from food distribution to vehicle workshops.





## COTY, BOURNEMOUTH

### THE DETAIL

The first phase of work is complete; relocation of an existing car park, an extension to the service yard and erection of a security lodge.

Now working on the second phase, the main development, we are building six industrial units with office space, car parking with EV charging points, service yards and other external external works including landscaping, gates, fencing, refuse and cycle stores.

**Client:** Marick Estates  
**Sq ft:** 107,000



## ADANAC TRADE PARK, AP6

Three industrial units and a Gregg's drive-thru, our third and fourth Adanac projects at the 25 acre Southampton site.

**Client:** Oceanic Estates  
**Sq ft:** 163,000



### THE DETAIL

AP6 comprises three separate terraces of 21 industrial units.

The Greggs drive-thru is Mildren's fourth, having previously built two McDonalds and a Costa Coffee.



# ASHDOWN RETAIL PARK, UCKFIELD

## THE DETAIL

Working with Bride Hall Developments and funded by London Metric, this project comprised a 21,000 sq ft M&S and a 20,000 sq ft Home Bargains.

**Client:** Bride Hall Developments / London Metric  
**Sq ft:** 41,000



## RETAIL PARK EXPERTISE

With extensive experience building retail parks, managing the elements around planning and environmental protection, we continue to work with some of the biggest names in retail.

M&S, Costa Coffee, Aldi, Travis Perkins and Benchmarx, MKM, Wickes, McDonalds, Co-op, Tesco Express, Dunelm, B&M and Home Bargains.



**THE DETAIL**

Our fifth project at Adanac Trade Park, AP3, is currently under construction. Includes an ampitheatre, new roads, footpaths, a service yard, cycle parking and storage and hard / soft landscaping.

The office building will house open-plan offices with meeting and clinical functions. The technical facility will accommodate laboratories, workshops and cleanrooms.



**ADANAC TRADE PARK, AP3**

Two-storey office building with a single storey technical facility linked by a two-storey atrium with 420 car parking spaces.

**Client:** Oceanic Estates  
**Sq ft:** 108,000



# LANGSTONE PARK, HAVANT

## THE DETAIL

Another live project, Langstone entails three new speculative industrial units, with mezzanine office space and Cat-A level fit-out.

**Client:** XLB Property  
**Sq ft:** 91,000



## CIVIL ENGINEERING EXPERTISE

External works include cut and fill, cap and ground improvement. We are also carrying out alterations to existing access roads and site access, external services and drainage. The project includes new connections and diversion of existing as required.

# BRISTOW, SEARCH AND RESCUE TRAINING CENTRE, FAREHAM

## THE DETAIL

We are currently delivering this state-of-the-art project for Bristow Helicopters. The new Search and Rescue Training Centre comprises CFA piling, a steel frame building 20m high, curtain walling, a 4m deep wave pool with extensive M&E, teaching and welfare facilities.



# INDUSTRIAL & COMMERCIAL

MILDREN  
CONSTRUCTION  
LIMITED



---

01202 487480

[main@mildrenconstruction.co.uk](mailto:main@mildrenconstruction.co.uk)

[www.mildrenconstruction.co.uk](http://www.mildrenconstruction.co.uk)



JUSTIN GALLOWAY

Pre-Construction and BD Director

07469 855927



RICHARD HOLMES

Construction Director

07584 316952